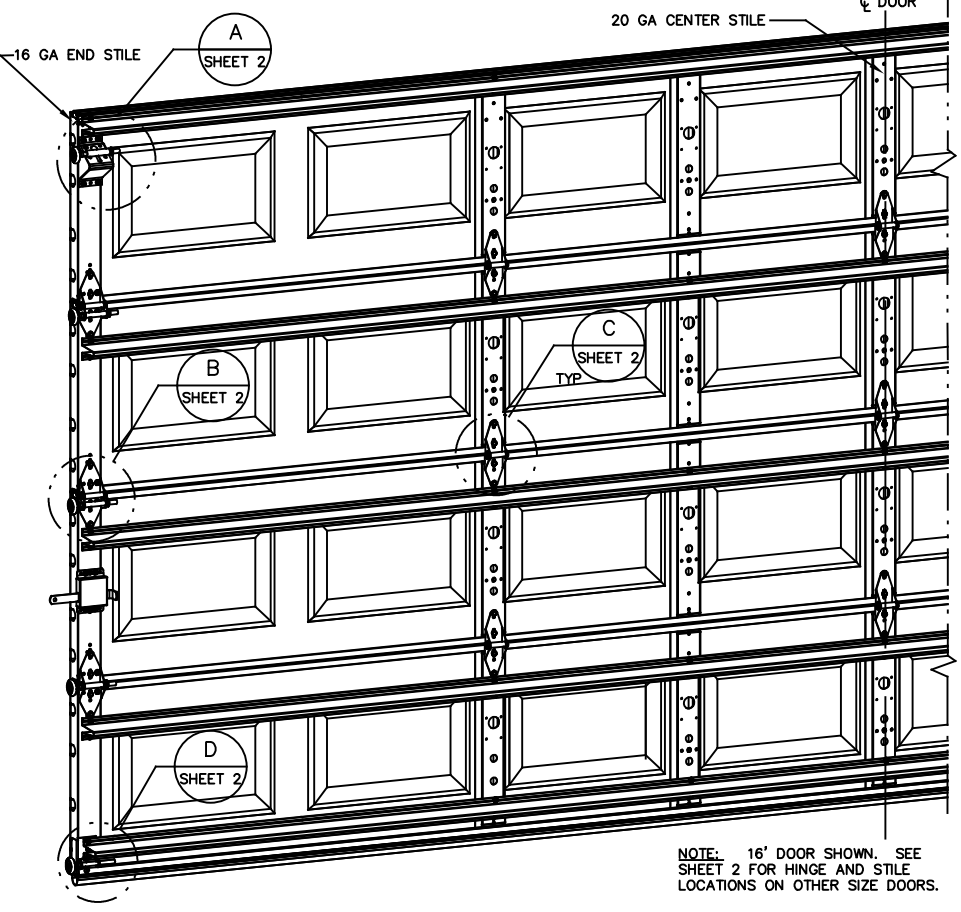
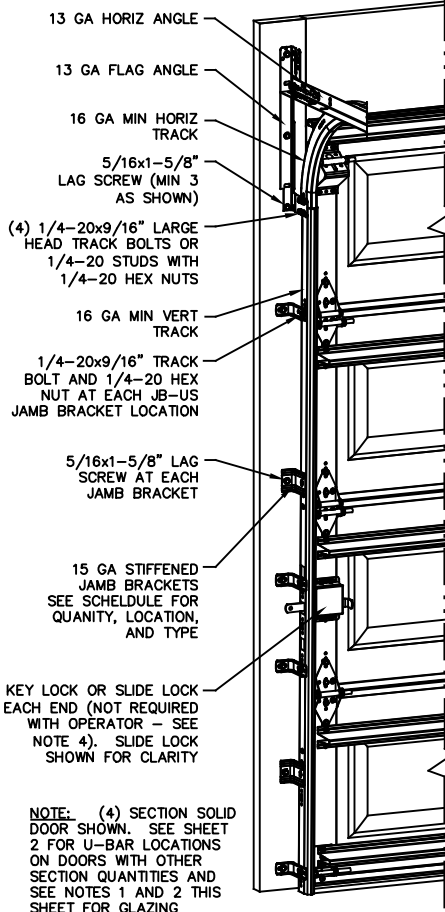


NOTES:

- NON IMPACT GLAZING OPTIONS:
 - 16 X 9.75 CLEAR OPENING INSTALLED TOP OR INTERMEDIATE SECTION.
 - 36.75 X 9.75 CLEAR OPENING INSTALLED TOP OR INTERMEDIATE SECTION.
 GLAZING SSB (0.090") MINIMUM. MAY INCLUDE DECORATIVE INSERTS NOT AVAILABLE IN MORE THAN ONE SECTION. DOES NOT SATISFY WINDBORNE-DEBRIS.
- IMPACT GLAZING OPTION:
 16.75 X 9.75 CLEAR OPENING
 GLAZING 1/4" GROOVED POLYCARBONATE ALUMINUM FRAMES WITH 10 SCREWS MAY INCLUDE DECORATIVE INSERTS INSTALLED IN TOP OR INTERMEDIATE SECTION. NOT AVAILABLE IN MORE THAN ONE SECTION. SEE ASSEMBLY DETAIL ON SHEET 2.
- VINYL OR WOOD DOOR STOP NAILED A MAXIMUM OF 6" O.C. MUST OVERLAP TOP AND BOTH ENDS OF PANELS MINIMUM 7/16" TO MEET NEGATIVE PRESSURES.
- KEY LOCK, SLIDE LOCKS, OR OPERATOR REQUIRED.
- LOUVER OPTION - .032" MINIMUM LOUVERS IN MOLDED FRAMES SCREWED TOGETHER WITH A MINIMUM OF (10) #8x1" SCREWS INSTALLED IN THE BOTTOM SECTION. LOUVERS ARE NOT IMPACT RESISTANT AND DO NOT MEET THE REQUIREMENTS FOR WIND-BORNE DEBRIS REGIONS.
- SECTION STEEL TO HAVE A MINIMUM 25 GA THICKNESS.
- THE DESIGN OF THE SUPPORTING STRUCTURAL ELEMENTS SHALL BE THE RESPONSIBILITY OF THE PROFESSIONAL OF RECORD FOR THE BUILDING OR STRUCTURE AND IN ACCORDANCE WITH CURRENT BUILDING CODES FOR THE LOADS LISTED ON THIS DRAWING.
- DOOR JAMB TO BE MINIMUM 2" X 6", GRADE 2 SOUTHERN PINE. REFER TO JAMB CONNECTION SUPPLEMENT FOR ATTACHMENT TO SUPPORTING STRUCTURE.
- FOR LOW HEAD ROOM LIFT CONDITIONS, TOP BRACKET SHALL BE A 13 GA LHR 7/4 TOP BRACKET WITH A MINIMUM OF (3) 1/4-14x7/8" SELF DRILLING CRIMPITE SCREWS IN LIEU OF THE BRACKET SHOWN ON THIS DRAWING. U-BAR ON TOP SECTION SHALL BE INSTALLED ON TOP OF LHR TOP BRACKETS.



NOTE: 16' DOOR SHOWN. SEE SHEET 2 FOR HINGE AND STILE LOCATIONS ON OTHER SIZE DOORS.

NOTE: (4) SECTION SOLID DOOR SHOWN. SEE SHEET 2 FOR U-BAR LOCATIONS ON DOORS WITH OTHER SECTION QUANTITIES AND SEE NOTES 1 AND 2 THIS SHEET FOR GLAZING OPTIONS.

REVISIONS
PO NEW DRAWING, PER ER 31052 ESC 9/7/18
P1 UPDATED NOTES ADDED LHR DETAIL ER 31052 ESC 2/12/19
REV B ADDED IRC/IBC NOTE TLC 4/12/21

SUPERIMPOSED DESIGN PRESSURE LOADS ON SUPPORTING STRUCTURE

DOOR WIDTH	DOOR HEIGHT	UNIFORM LOAD EACH JAMB (PLF)
10'-0"	ALL	+130.0/-145.0
12'-0"	ALL	+156.0/-174.0
14'-0"	ALL	+182.0/-203.0
15'-0"	ALL	+195.0/-217.5
16'-0"	ALL	+208.0/-232.0

JAMB BRACKET SCHEDULE

DOOR HEIGHT	NO. OF SECTIONS	NO. OF JAMB BRACKETS (EACH JAMB)	TRACK TYPE	LOCATION OF CENTERLINE OF JAMB BRACKETS MEASURED FROM BOTTOM OF TRACK (ALL DIMENSIONS ± 2")
6'-6"	4	6	QI	2" (JB-US), 14" (QI), 23-1/2" (JB-US), 34" (JB-US), 44" (QI), 56" (JB-US)
6'-6"	4	6	FAT	2" (JB-US), 10" (JB-US), 21-3/4" (JB-US), 39" (JB-US), 48" (JB-US), 57-1/4" (JB-US)
7'-0"	4	6	QI	2" (JB-US), 14" (QI), 25-1/2" (JB-US), 34" (JB-US), 44" (QI), 63-1/4" (JB-US)
7'-0"	4	6	FAT	2" (JB-US), 10" (JB-US), 25-3/4" (JB-US), 36" (JB-US), 52-1/2" (JB-US), 63-1/4" (JB-US)
7'-6"	5	8	QI	2" (JB-US), 14" (QI), 24-1/2" (JB-US), 32-1/2" (JB-US), 43" (QI), 49" (JB-US), 62-1/2" (QI), 72" (JB-US)
7'-6"	5	8	FAT	2" (JB-US), 10" (JB-US), 22-3/4" (JB-US), 36" (JB-US), 45" (JB-US), 54-1/4" (JB-US), 63" (JB-US), 74-1/2" (JB-US)
8'-0"	5	8	QI	2" (JB-US), 14" (QI), 23" (JB-US), 34" (JB-US), 46" (QI), 58" (JB-US), 66-1/2" (QI), 75-1/2" (JB-US)
8'-0"	5	8	FAT	2" (JB-US), 10" (JB-US), 25-3/4" (JB-US), 39" (JB-US), 48" (JB-US), 57-1/2" (JB-US), 66" (JB-US), 75-1/2" (JB-US)
> 8'-0"				SEE NOTE BELOW

NOTE: (JB-US) FOLLOWING DIMENSION DENOTES SLOTTED JAMB BRACKET ATTACHED TO TRACK WITH 1/4-20x9/16" TRACK BOLT AND NUT. (QI) FOLLOWING DIMENSION DENOTES QUICK INSTALL JAMB BRACKET INSTALLED IN BUTTERFLY SLOT. NO ADDITIONAL HARDWARE NEEDED TO ATTACH TO TRACK. ALL DOORS GREATER THAN 8' IN HEIGHT REQUIRE USE OF CONTINUOUS WALL ANGLE. SEE SUPPLEMENT TRACK CHART FOR DETAILS.

COMPLIES WITH THE REQUIREMENTS OF IRC/IBC 1018.

Wayne Dalton
 GARAGE DOORS™
 A DIVISION OF OVERHEAD DOOR CORP.
 3395 ADDISON DRIVE
 PENSACOLA, FLORIDA 32514
 (850) 474-9890

STATIC PRESSURE RATINGS		APPROVED SIZES		SCALE: N.T.S.		SIZE: A	
DESIGN (PSF):	+26.00/-29.00	MAX WIDTH:	16'-0"	DATE		NAME	
TEST (PSF):	+39.00/-43.50	MAX HEIGHT:	14'-0"	DRAWN	9/17/18	ESC	
IMPACT/CYCLIC RATED (YES/NO):	YES	MAX SECTION HEIGHT:	21"	CHECKED	4/12/21	TLC	
MODELS 8000/8100/8200				SHEET 1 OF 2			
WINDLOAD SPECIFICATION OPTION CODE 1126				DRAWING PART NO.		REV.	
				364264		B	

JOHN E. SCATES, PE
 2560 KING ARTHUR BLVD #124-54
 LEWISVILLE, TX 75056
 FL PE 51737
 TX PE 56308/F2203

PROFESSIONAL ENGINEER'S SEAL PROVIDED ONLY FOR VERIFICATION OF WINDLOAD CONSTRUCTION DETAILS.

12 GA ROLLER SLIDE ATTACHED TO BRACKET WITH 5/16-18 BOLT & NUT IN CENTER SLOT AND 1/4-20x9/16" TRACK BOLT & 1/4-20 HEX NUT THROUGH ANY TWO ALIGNING HOLES

12 GA COMMERCIAL 'A' FRAME TOP BRACKET ATTACHED WITH (4) 1/4-14x7/8" SELF DRILLING CRIMPITTE SCREWS

ADD (2) 1/4-14x7/8" SELF DRILLING CRIMPITTE SCREWS (INSIDE OF EACH END HINGE)

2" NYLON STORMGARD ROLLER WITH 4-1/2" STEM AND 7/16" PUSHNUT AT EACH ROLLER LOCATION. 1/4" MAX BETWEEN PUSHNUT AND BRACKET OR HINGE. OPTIONAL- 11 BALL BEARING NYLON ROLLER

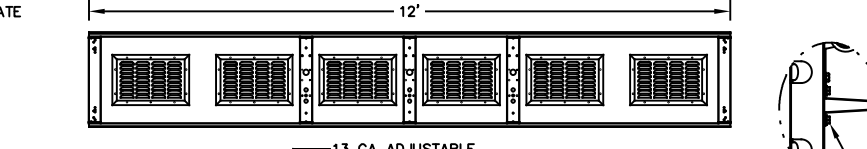
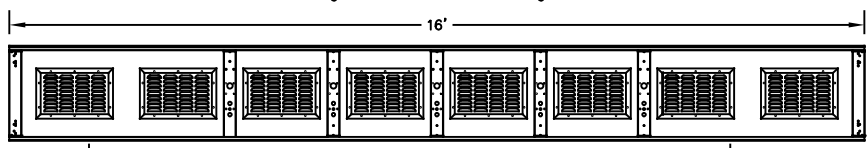
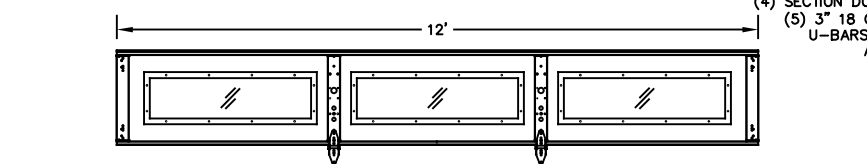
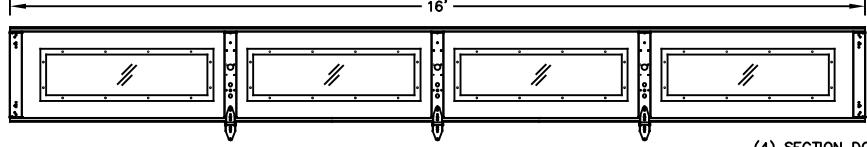
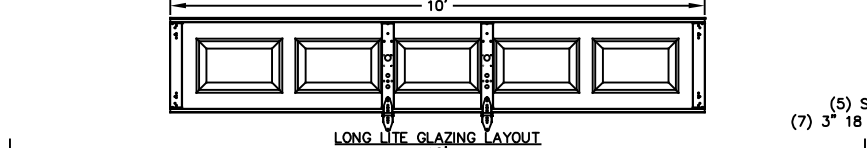
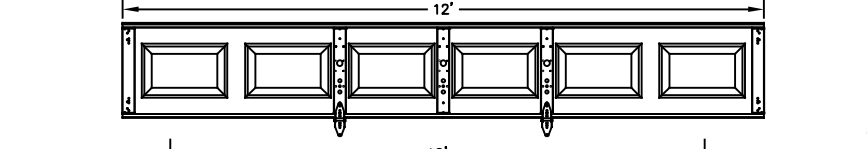
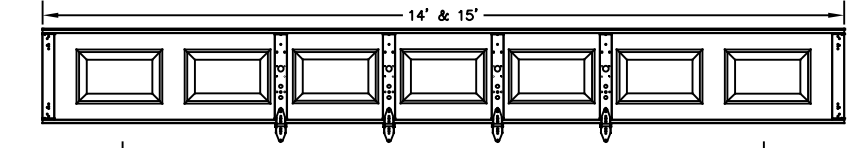
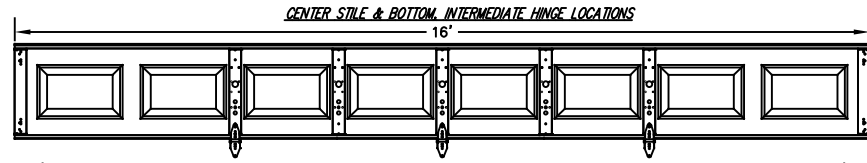
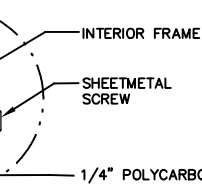
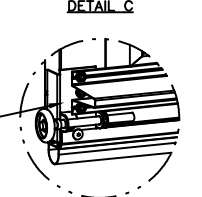
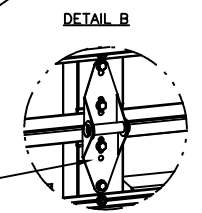
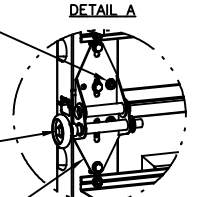
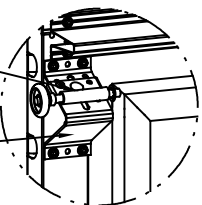
#1 HINGE IS 14 GA
#2 HINGE IS 13 GA
#3 HINGE (AND ALL ABOVE) ARE 13 GA WIDE BODY END HINGE ATTACHED WITH (4) 1/4-14x5/8" SELF TAPPING SCREWS

18 GA NARROW BODY INTERMEDIATE HINGE ATTACHED WITH (4) 1/4-14x5/8" SELF TAPPING SCREWS

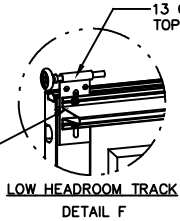
14 GA BOTTOM BRACKET ATTACHED WITH (4) 1/4-14x7/8" SELF DRILLING CRIMPITTE SCREWS (2) OF WHICH IS THROUGH STRUT AND AND (1) 1/4-14x5/8" SELF DRILLING RED SCREW

INTERIOR FRAME
SHEETMETAL SCREW
EXTERIOR FRAME
1/4" POLYCARBONATE

IMPACT WINDOW / ALUMINUM FRAME WITH GROOVED POLYCARBONATE
DETAIL E



PLACE 3" U-BAR OVER LOW HEADROOM BRACKET ATTACH THRU END STILE AT EACH END WITH (2) 1/4-14x7/8" SELF DRILLING CRIMPITTE SCREWS.



U-BAR LOCATIONS
(8) SECTION DOORS WITH (10) 3" 18 GA 80 KSI U-BARS LOCATED AS SHOWN

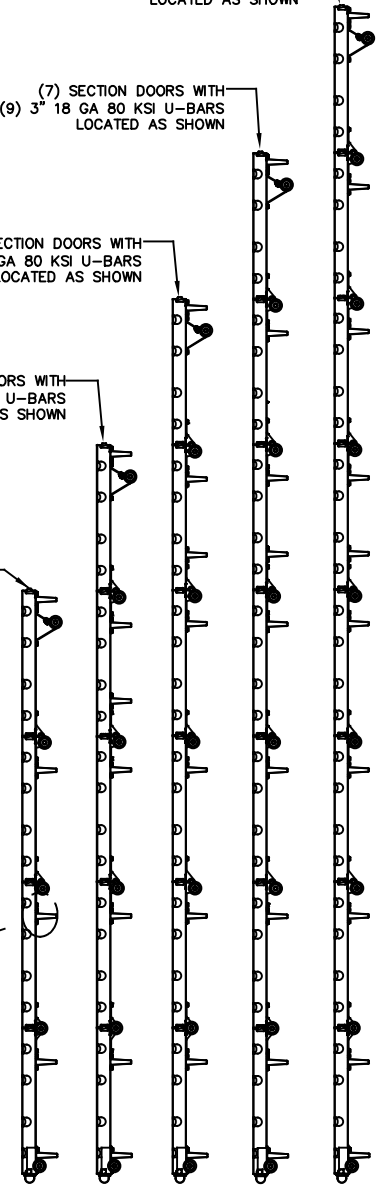
(7) SECTION DOORS WITH (9) 3" 18 GA 80 KSI U-BARS LOCATED AS SHOWN

(6) SECTION DOORS WITH (8) 3" 18 GA 80 KSI U-BARS LOCATED AS SHOWN

(5) SECTION DOORS WITH (7) 3" 18 GA 80 KSI U-BARS LOCATED AS SHOWN

(4) SECTION DOORS WITH (5) 3" 18 GA 80 KSI U-BARS LOCATED AS SHOWN

ATTACH U-BAR WITH (2) 1/4-14x7/8" SELF DRILLING CRIMPITTE SCREWS AT EACH STILE LOCATION, TYP.



STATIC PRESSURE RATINGS		APPROVED SIZES		SCALE: N.T.S.		SIZE: A	
DESIGN (PSF):	+26.00/-29.00	MAX WIDTH:	16'-0"	DATE	NAME		
TEST (PSF):	+39.00/-43.50	MAX HEIGHT:	14'-0"	DRAWN	9/17/18 ESC		
IMPACT/CYCLIC RATED (YES/NO):	YES	MAX SECTION HEIGHT:	21"	CHECKED	4/12/21 TLC		
MODELS 8000/8100/8200				SHEET 2 OF 2			
WINDLOAD SPECIFICATION OPTION CODE 1126				DRAWING PART NO.		REV.	
				364264		B	